

RBI!™

BASEBALL 3



SEGA
GENESIS
SPORTS ENTERTAINMENT



TENGEN

TABLE OF CONTENTS

1. INTRODUCTION	1
2. HOW TO START PLAY	2
Press Start	2
Options	3
3. OFFENSE CONTROLS	4
At Bat	4
Base Running Control	4
Batter Time-Out Options	5
4. DEFENSE CONTROLS	6
Pitching	6
Fielding the Ball	7
Pitcher Time-Out Options	8
5. WATCH MODE	8
6. SERIES PLAY	9
7. TIPS	10
Pitching	10
Fielding	10
OFFICIAL 1990 ROSTERS & STATS	11
'83-'89 DIVISION CHAMPS: ROSTERS & STATS	21

CONGRATULATIONS!

You have just purchased R.B.I. BASEBALL 3, a premium quality YENGEN game for play on your Sega Genesis! The incredible excitement of pro baseball is now at your fingertips, ready to provide countless hours of intense, detailed action at home!

*Enough talk — it's time to **play ball!***

1. INTRODUCTION

R.B.I. BASEBALL 3 simulates real baseball. Most of the rules and strategies of the actual game apply. Like a real game, you must bat, pitch, field, run and substitute players well to win. Each player has his own strengths and weaknesses based on his real-life numbers. For batters, the stats include his position, hitting ability, power, running speed and whether he is right- or left-handed. For pitchers, the stats include his control and pitching speed.

All the players in R.B.I. Baseball 3 were developed from two sets of actual pro stats: the 1990 teams and the Division Champions from 1983 through 1989. For example, a player who stole numerous bases and had a high batting average in real life will have a high speed in the game. A player with numerous home runs in real life will have a good power rating in the game.

Beat all the other teams and you'll earn the chance to challenge a "secret" super team!

2. HOW TO START PLAY:

Press START :

1P: Play against the computer.

2P: Competitive play.

Watch: Computer vs. Computer (as if on TV).

To Select Your Teams and Year:

Move the cursor with the control pad. Press A to select the team and year chosen. Select your computer team this way as well. Not all years are available since years before 1990 are for Division Champions only.

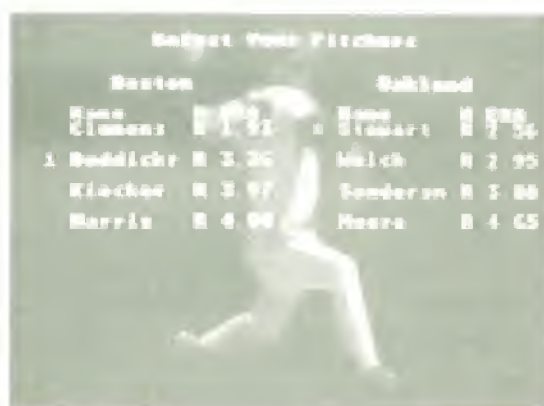
To Select Your Starting Pitcher:

Move the cursor up and down with the control pad. Press A to select.

Note: You may use up to 5 pitchers per game; 1 summer and 3 relievers or 2



Select teams and year.



Select starting pitcher.



Select starting lineup.

starters and 3 relievers. The first 4 pitchers on your roster are the starters. A starting pitcher may only appear in every other game of a series.

To select your starting line up: Move the cursor with the control pad.

Press **B** to change players.

Press **A** to accept the current lineup.

Press **C** to view different statistics.

Options:

To change the current option setting, press **START** or **A**.

To cycle among options, press **UP** or **DOWN**.

Music:

On: Background music plays during the game.

Off: No background music plays.

Note: The sound effects are always present.

Difficulty:

Hard/Medium/Easy (how well the computer plays).

Note: A player may forfeit at any time. To forfeit, go to the scoreboard and hold down **B** and **C**, then press **A**.

Continue:

To enter a password.

Play:

Return to the main menu.



Options Screen.

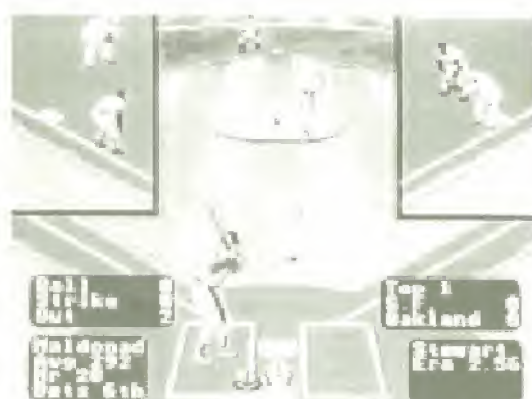
3. OFFENSE CONTROLS

At Bat:

Control Pad:
Move the batter's position in batter's box.

A Button: Batter swings bat. Press and hold for a complete swing.

C Button: Use this button to bunt. Press once and the batter prepares to bunt. If the pitch is a ball, press again and the bat will return to the ready position. If you press too late, a strike will be called.



Base Running Control:

Control Pad:



B Button: Base runner advances to the next base. Choose the base you want the runner to run to with control pad and press **B**. Use **B** to steal bases, for hit and run plays, squeeze plays and to advance extra bases during a play.

C Button: Base runner returns to the previous base. Choose the base you want the runner to run to with the control pad and press **C**.

Note: The base runners run as soon as the ball is hit. When a fly ball is hit, it is up to the player to make all of the base runners go back to avoid a double or triple play. After tagging up you may advance to the next base.

Batter Time-Out Options:

(Press **START** to call time out, and again to cancel.)

Substitutions (SUB): Change a batter or base runner.

Move the cursor to the player you wish to remove from the lineup.

His name appears at the top of the screen under the word "Replace." Now move the cursor to the player you wish to insert from the bench. His name appears to the right of the person he is replacing. Press **A** to substitute or **START** to not substitute.

Switch Hit (Sw. Hit): Switch to left or right handed batting. Only batters who are switch hitters may do this.

Scoreboard (Score): While viewing the scoreboard, hold down **B** and **C**, then press **A** to forfeit.

Time-in: Return to play.

Instant Replay (Replay): See the last fielding play again.



Batter Time-Out Screen.

4. DEFENSE CONTROLS

Pitching:

Control pad:



A Button: Pitches the ball — Press *A* to throw the pitch. On the control pad, press and hold up, down, or neither before you press *A* to decide the speed of the ball. Once the windup starts the speed cannot be changed. After the ball is pitched, you can control the ball by moving the control pad left and right.

B Button: Attempt to pick off a base runner. You may choose which base the pitcher throws to by using the control pad and pressing *B*, then pressing *A* to throw to a base.

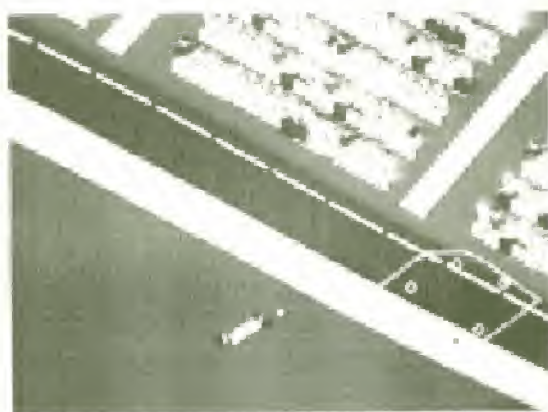
Fielding the Ball:

Control Pad: Moves your fielders —



Note: The pitcher can move side to side on the mound before the pitch is thrown by using the control pad.

A Button: Press to throw the ball. The ball will be thrown to the base you select with the control pad. When no base is selected, the ball will be thrown to first base.



B Button: Press to run to a base. The fielder will run to the base you select with the control pad. When no base is selected, the fielder will run to first base.

To Dive and Jump: When the ball is hit, press **B** and a direction to dive. Press **C** to jump.

Errors: Occasionally a fielder will “bobble” the ball, or make a poor throw. Avoid throwing the ball to a base when a fielder has left the position. The chance for errors is based on the team you are using.

Pitcher Time-Out Options:

(Press START to call time out)

New Pitcher (Relief): Move the cursor to the desired relief pitcher. Press A to do the substitution.

New Fielder (SUB): Move the cursor to the player that you wish to remove from the line up. His name appears at the top of the screen, below the word "Replace." Now move the cursor to the player you wish to insert from the bench. His name appears to the right of the person he is replacing. Press A to substitute, START to not substitute.

Scoreboard: Press A to see the scoreboard.

Time-In: Return to play.

Instant Replay (Replay): See an instant replay of the last play that happened. Some plays cannot be viewed by instant replay.

5. WATCH MODE:

Watch mode can also be used as a training mode or a manager mode. In this mode, the computer will control the game, but you may participate by using the controller. To manage, let the computer play the game while you substitute players and tell runners to steal bases. To train, let the computer do the difficult fielding while you do the easier fielding.



Pitcher Time-Out Screen.

6. SERIES PLAY:

In a series, remember that a starting pitcher may only appear as often as every other game. If you use all the best starting pitchers in your first game, they will not be available in the second.

In two-player mode, you play a seven-game series.

In single-player mode, if you select two different teams in the same league, you will play a series against all the teams in that league. Otherwise, you will play a seven-game series.

The four "Leagues" are:

- 1990 National
- 1990 American
- National Division winners
- American Division winners

To play the next game in the series, press **A** or **START** on the Newspaper Screen with controller 1. Make sure to write down your password (shown in the bottom left corner of the screen) if you want to continue the series later.

7. TIPS:

Pitching:

The starting pitchers have more stamina than the relievers. Always be aware of your pitcher's ability because he gets tired. Keep an eye on the MPH and how much you can move the pitches sideways. The fastball and sinkerball will use more stamina than normal pitches. When pitching to the computer, especially when a power hitter is batting, try not to throw it over the middle of the plate. Using the sinkerball when you have two strikes on the hitter is often a good tactic.

Fielding:

You should begin to move your fielders as soon as the ball is hit. Get familiar with the starting points of all your fielders so you can react quickly instead of waiting until you see the fielders. When a pop fly is hit, watch the radar - you need to predict where the ball is going to land and move the closest player to that destination. Adjustments should be made based on the shadow of the ball and the tone that indicates the height of the ball.

Batting: Do not stand still in the batter's box. Try to fool the pitcher as to where you will be when the ball is thrown.

General: If you replace a fielder with a player that is not from the same position, there will be more errors.

Never talk to your opponent about the last pitch. If he knows what you think about it, that may help him on the next pitch.

When you throw or run with the ball, choose the desired direction with the control pad, then press **A** or **B**. Do not select a direction, let go, then press **A** or **B**. You must hold the control pad arrow until after the button is pressed.

Hint: For a quick throw, press a direction and **A** at the same time.

OFFICIAL 1990 PLAYER ROSTERS & STATS

RBI Baseball 3 uses real players and their actual 1990 stats. Now, you get to make all the decisions a real manager makes! These stats will help you decide which players to put on the field to get a winning combination. You saw how the pros did in real life. Now see what they can do when you manage them!

ABBREVIATION KEYS

BATTERS

NAME: NAME, P: PITCHER, B: BATTER, F: FIELDER

AVG: AVERAGE AVERAGE

HR: HOME RUNS

RBI: RUNS BATTERS IN PLAY

HR: RUNS FROM HOME RUNS ONLY (EXCLUDES RBI)

PITCHERS

NAME: PITCHER NAME, ERA: EARNED RUN AVERAGE

IP: INNING PITCHED

AtariGuide

(BA) BALTIMORE

BATTERS

PLAYER	NAME	AVG	HR	RBI	POS
SMITH	B	.250	3	15	D
SPRENGER	B	.262	11	17	D
MILLER	B	.262	21	17	F
FRANCO	B	.250	21	7	D
FRANCO	B	.240	10	7	D
FRANCO	B	.261	3	7	D
FRANCO	B	.224	15	3	D
FRANCO	B	.250	3	6	D
FRANCO	B	.253	12	11	D
FRANCO	B	.254	1	7	D
FRANCO	B	.241	3	3	D
FRANCO	B	.207	1	0	D
FRANCO	B	.211	0	3	D

PITCHERS

PLAYER	NAME	ERA
MILLER	B	3.07
FRANCO	B	3.06
FRANCO	B	4.34
FRANCO	B	4.46
FRANCO	B	2.46
FRANCO	B	2.51
FRANCO	B	2.54
FRANCO	B	3.52
FRANCO	B	2.64
FRANCO	B	3.10

(CA) CALIFORNIA

BATTERS

PLAYER	NAME	AVG	HR	RBI	POS
FRANCO	B	.230	2	14	D
FRANCO	B	.273	5	1	D
FRANCO	B	.261	21	7	D
FRANCO	B	.252	24	0	D
FRANCO	B	.248	9	3	D
FRANCO	B	.233	6	0	D
FRANCO	B	.244	1	4	D
FRANCO	B	.272	1	13	D
FRANCO	B	.207	3	15	D
FRANCO	B	.264	10	4	D
FRANCO	B	.244	3	3	D
FRANCO	B	.255	2	0	D
FRANCO	B	.238	16	11	D
FRANCO	B	.211	7	0	D

PITCHERS

PLAYER	NAME	ERA
FRANCO	B	1.40
FRANCO	B	1.25
FRANCO	B	4.40
FRANCO	B	4.07
FRANCO	B	1.03
FRANCO	B	3.05
FRANCO	B	3.38
FRANCO	B	4.10
FRANCO	B	4.08
FRANCO	B	1.14

(CH) CHICAGO (NTL)

BATTERS

PLAYER	AVG	R	H	HR	RBI	POS
SMITH	.300	3	10			
WILLIAMS	.280	4	14			
WATSON	.270	2	11			
SANDERS	.260	2	10			
WILSON	.250	3	12			
SALAZAR	.240	1	8			
MELTON	.230	1	7			
FRANK	.220	2	9			
PACELLA	.210	1	6			
CLARK	.200	1	5			
WILLIAMS	.190	2	8			
ANDERSON	.180	1	4			
WILSON	.170	1	3			
WHITE	.160	1	2			

PITCHERS

PLAYER	AVG	ERA
SMITH	.150	1.50
WILLIAMS	.140	1.40
WATSON	.130	1.30
SANDERS	.120	1.20
WILSON	.110	1.10
SALAZAR	.100	1.00
MELTON	.090	0.90
FRANK	.080	0.80
PACELLA	.070	0.70
CLARK	.060	0.60
WILLIAMS	.050	0.50
ANDERSON	.040	0.40
WILSON	.030	0.30
WHITE	.020	0.20

(AT) ATLANTA

BATTERS

PLAYER	AVG	R	HR	RBI	POS
SMITH	.290	4	11	10	
WILLIAMS	.280	3	10	9	
WATSON	.270	2	9	8	
SANDERS	.260	3	10	9	
WILSON	.250	2	8	7	
SALAZAR	.240	1	7	6	
MELTON	.230	2	8	7	
FRANK	.220	1	6	5	
PACELLA	.210	1	5	4	
CLARK	.200	1	4	3	
WILLIAMS	.190	2	7	6	
ANDERSON	.180	1	5	4	
WILSON	.170	1	4	3	
WHITE	.160	1	3	2	

PITCHERS

PLAYER	AVG	ERA
SMITH	.150	1.50
WILLIAMS	.140	1.40
WATSON	.130	1.30
SANDERS	.120	1.20
WILSON	.110	1.10
SALAZAR	.100	1.00
MELTON	.090	0.90
FRANK	.080	0.80
PACELLA	.070	0.70
CLARK	.060	0.60
WILLIAMS	.050	0.50
ANDERSON	.040	0.40
WILSON	.030	0.30
WHITE	.020	0.20

(BO) BOSTON

BATTERS

PLAYER	AVG	R	HR	RBI	POS
SMITH	.280	3	10	9	
WILLIAMS	.270	2	9	8	
WATSON	.260	1	8	7	
SANDERS	.250	2	9	8	
WILSON	.240	1	7	6	
SALAZAR	.230	1	6	5	
MELTON	.220	2	7	6	
FRANK	.210	1	5	4	
PACELLA	.200	1	4	3	
CLARK	.190	1	3	2	
WILLIAMS	.180	2	6	5	
ANDERSON	.170	1	4	3	
WILSON	.160	1	3	2	
WHITE	.150	1	2	1	

PITCHERS

PLAYER	AVG	ERA
SMITH	.150	1.50
WILLIAMS	.140	1.40
WATSON	.130	1.30
SANDERS	.120	1.20
WILSON	.110	1.10
SALAZAR	.100	1.00
MELTON	.090	0.90
FRANK	.080	0.80
PACELLA	.070	0.70
CLARK	.060	0.60
WILLIAMS	.050	0.50
ANDERSON	.040	0.40
WILSON	.030	0.30
WHITE	.020	0.20

(PH) PHILADELPHIA**BATTERS**

PLAYER	TEAM AVG	HR	RBI	POS
SPENCER	.317	10	71	
FRANCO	.306	20	61	
STANLEY	.304	11	61	
WILSON	.295	3	61	
SMITH	.286	7	56	
CHAPMAN	.282	11	51	
SHAW	.275	5	51	
QUINN	.274	5	51	
ROSE	.261	1	46	
ANDERSON	.251	1	41	
TRAVIS	.241	1	41	
WILLIAMS	.237	1	41	

PITCHERS

PLAYER	TEAM ERA
FRANCO	4.0
WILSON	4.0
QUINN	4.0
ANDERSON	4.0
SMITH	4.0
STANLEY	4.0
SHAW	4.0
FRANCO	4.0
WILSON	4.0
QUINN	4.0
ANDERSON	4.0
SMITH	4.0
STANLEY	4.0
SHAW	4.0
QUINN	4.0

(LA) LOS ANGELES**BATTERS**

PLAYER	TEAM AVG	HR	RBI	POS
ANDERSON	.317	10	71	
FRANCO	.306	20	61	
STANLEY	.304	11	61	
WILSON	.295	3	61	
SMITH	.286	7	56	
CHAPMAN	.282	11	51	
SHAW	.275	5	51	
QUINN	.274	5	51	
ROSE	.261	1	46	
ANDERSON	.251	1	41	
TRAVIS	.241	1	41	
WILLIAMS	.237	1	41	

PITCHERS

PLAYER	TEAM ERA
FRANCO	4.0
WILSON	4.0
QUINN	4.0
ANDERSON	4.0
SMITH	4.0
STANLEY	4.0
SHAW	4.0
QUINN	4.0
ANDERSON	4.0
SMITH	4.0
STANLEY	4.0
SHAW	4.0
QUINN	4.0
ANDERSON	4.0
SMITH	4.0
STANLEY	4.0

(MW) MILWAUKEE**BATTERS**

PLAYER	TEAM AVG	HR	RBI	POS
ANDERSON	.317	10	71	
FRANCO	.306	20	61	
STANLEY	.304	11	61	
WILSON	.295	3	61	
SMITH	.286	7	56	
CHAPMAN	.282	11	51	
SHAW	.275	5	51	
QUINN	.274	5	51	
ROSE	.261	1	46	
ANDERSON	.251	1	41	
TRAVIS	.241	1	41	
WILLIAMS	.237	1	41	

PITCHERS

PLAYER	TEAM ERA
FRANCO	4.0
WILSON	4.0
QUINN	4.0
ANDERSON	4.0
SMITH	4.0
STANLEY	4.0
SHAW	4.0
QUINN	4.0
ANDERSON	4.0
SMITH	4.0
STANLEY	4.0
SHAW	4.0
QUINN	4.0
ANDERSON	4.0
SMITH	4.0
STANLEY	4.0

(NY) NEW YORK (AMER)**BATTERS**

PLAYER	HAND	AVG	HR	RBI	PTS
GAFFNEY	R	.300	1	5	1
HELD	L	.280	0	0	0
ROBINSON	R	.260	0	0	0
MORAN	L	.250	0	0	0
WILLIAMS	R	.230	0	0	0
WILSON	R	.220	0	0	0
WALKER	R	.210	0	0	0
SMITH	R	.200	0	0	0
JOHNSON	R	.190	0	0	0
ANDERSON	R	.180	0	0	0
LEE	R	.170	0	0	0
WATSON	R	.160	0	0	0
WHITE	R	.150	0	0	0
BLACK	R	.140	0	0	0
GREEN	R	.130	0	0	0
BROWN	R	.120	0	0	0
SMITH	R	.110	0	0	0
WALKER	R	.100	0	0	0
ANDERSON	R	.090	0	0	0
LEE	R	.080	0	0	0
WATSON	R	.070	0	0	0
WHITE	R	.060	0	0	0
BLACK	R	.050	0	0	0
GREEN	R	.040	0	0	0
BROWN	R	.030	0	0	0
SMITH	R	.020	0	0	0
WALKER	R	.010	0	0	0

PITCHERS

PLAYER	W	L	ERA	IP	SHO
SMITH	1	0	1.50	10	0
WALKER	0	1	2.00	10	0
ANDERSON	0	1	2.50	10	0
LEE	0	1	3.00	10	0
WATSON	0	1	3.50	10	0
WHITE	0	1	4.00	10	0
BLACK	0	1	4.50	10	0
GREEN	0	1	5.00	10	0
BROWN	0	1	5.50	10	0
SMITH	0	1	6.00	10	0
WALKER	0	1	6.50	10	0
ANDERSON	0	1	7.00	10	0
LEE	0	1	7.50	10	0
WATSON	0	1	8.00	10	0
WHITE	0	1	8.50	10	0
BLACK	0	1	9.00	10	0
GREEN	0	1	9.50	10	0
BROWN	0	1	10.00	10	0

(SE) SEATTLE**BATTERS**

PLAYER	HAND	AVG	HR	RBI	PTS
SMITH	R	.300	1	5	1
WALKER	R	.280	0	0	0
ANDERSON	R	.260	0	0	0
LEE	R	.250	0	0	0
WATSON	R	.240	0	0	0
WHITE	R	.230	0	0	0
BLACK	R	.220	0	0	0
GREEN	R	.210	0	0	0
BROWN	R	.200	0	0	0
SMITH	R	.190	0	0	0
WALKER	R	.180	0	0	0
ANDERSON	R	.170	0	0	0
LEE	R	.160	0	0	0
WATSON	R	.150	0	0	0
WHITE	R	.140	0	0	0
BLACK	R	.130	0	0	0
GREEN	R	.120	0	0	0
BROWN	R	.110	0	0	0
SMITH	R	.100	0	0	0
WALKER	R	.090	0	0	0
ANDERSON	R	.080	0	0	0
LEE	R	.070	0	0	0
WATSON	R	.060	0	0	0
WHITE	R	.050	0	0	0
BLACK	R	.040	0	0	0
GREEN	R	.030	0	0	0
BROWN	R	.020	0	0	0
SMITH	R	.010	0	0	0

PITCHERS

PLAYER	W	L	ERA	IP	SHO
SMITH	1	0	1.50	10	0
WALKER	0	1	2.00	10	0
ANDERSON	0	1	2.50	10	0
LEE	0	1	3.00	10	0
WATSON	0	1	3.50	10	0
WHITE	0	1	4.00	10	0
BLACK	0	1	4.50	10	0
GREEN	0	1	5.00	10	0
BROWN	0	1	5.50	10	0
SMITH	0	1	6.00	10	0
WALKER	0	1	6.50	10	0
ANDERSON	0	1	7.00	10	0
LEE	0	1	7.50	10	0
WATSON	0	1	8.00	10	0
WHITE	0	1	8.50	10	0
BLACK	0	1	9.00	10	0
GREEN	0	1	9.50	10	0
BROWN	0	1	10.00	10	0

(SL) ST. LOUIS**BATTERS**

PLAYER	HAND	AVG	HR	RBI	PTS
SMITH	R	.300	1	5	1
WALKER	R	.280	0	0	0
ANDERSON	R	.260	0	0	0
LEE	R	.250	0	0	0
WATSON	R	.240	0	0	0
WHITE	R	.230	0	0	0
BLACK	R	.220	0	0	0
GREEN	R	.210	0	0	0
BROWN	R	.200	0	0	0
SMITH	R	.190	0	0	0
WALKER	R	.180	0	0	0
ANDERSON	R	.170	0	0	0
LEE	R	.160	0	0	0
WATSON	R	.150	0	0	0
WHITE	R	.140	0	0	0
BLACK	R	.130	0	0	0
GREEN	R	.120	0	0	0
BROWN	R	.110	0	0	0
SMITH	R	.100	0	0	0
WALKER	R	.090	0	0	0
ANDERSON	R	.080	0	0	0
LEE	R	.070	0	0	0
WATSON	R	.060	0	0	0
WHITE	R	.050	0	0	0
BLACK	R	.040	0	0	0
GREEN	R	.030	0	0	0
BROWN	R	.020	0	0	0
SMITH	R	.010	0	0	0

PITCHERS

PLAYER	W	L	ERA	IP	SHO
SMITH	1	0	1.50	10	0
WALKER	0	1	2.00	10	0
ANDERSON	0	1	2.50	10	0
LEE	0	1	3.00	10	0
WATSON	0	1	3.50	10	0
WHITE	0	1	4.00	10	0
BLACK	0	1	4.50	10	0
GREEN	0	1	5.00	10	0
BROWN	0	1	5.50	10	0
SMITH	0	1	6.00	10	0
WALKER	0	1	6.50	10	0
ANDERSON	0	1	7.00	10	0
LEE	0	1	7.50	10	0
WATSON	0	1	8.00	10	0
WHITE	0	1	8.50	10	0
BLACK	0	1	9.00	10	0
GREEN	0	1	9.50	10	0
BROWN	0	1	10.00	10	0

(SF) SAN FRANCISCO

BATTERS

PLAYER	HAND	AVG	HR	RBI	POS
BECKER	R	.389	3	19	D
BERNARDINI	R	.445	15	0	I
CLARK	L	.295	14	9	I
MITCHELL	R	.260	15	7	O
MURPHY	R	.275	8	4	I
PHILLIPS	L	.211	4	5	O
ROSEN	L	.295	0	9	O
THORNTON	R	.246	0	4	I
TRACY	R	.253	1	0	O
WAGNER	R	.263	1	7	O
WATSON	R	.264	0	1	O
WILLIAMS	R	.298	7	8	I
ZUMMERS	R	.349	7	5	O
TRACY	L	.200	4	7	I

PITCHERS

PLAYER	HAND	ERA
BURKE	R	2.70
WILSON	L	3.09
GARRETT	R	4.16
BIRNBAUM	R	3.57
BRANTLEY	L	3.20
TRACY	L	3.74
WAGNER	L	3.41
BECKER	R	3.90
WATSON	L	2.99
BERNARDINI	R	3.27

(TO) TORONTO

BATTERS

PLAYER	HAND	AVG	HR	RBI	POS
FERRELLI	L	.279	3	16	I
GRUBER	R	.264	3	0	O
WELL	R	.242	0	6	O
MCGINNIS	R	.303	24	0	I
FEJER	L	.300	15	0	O
ROSENBERG	R	.284	19	0	O
MURPHY	L	.304	3	0	O
LEE	R	.277	16	0	O
SPRUIELL	R	.252	14	0	O
MULLIN	L	.284	1	0	O
WHELAN	R	.272	6	0	O
MORSE	R	.276	4	0	O
WILLIAMS	R	.267	1	0	O
WILLIAMS	R	.260	0	0	O

PITCHERS

PLAYER	HAND	ERA
MILBY	R	3.93
BLAIR	L	3.97
KEE	R	4.45
TULLOCH	R	3.34
WATKINS	R	2.72
WELLS	L	3.14
WARR	L	3.45
WHELAN	R	3.93
WOLFE	R	3.75
DEBARTOLI	L	3.75

(TX) TEXAS

BATTERS

PLAYER	HAND	AVG	HR	RBI	POS
FRANCO	R	.296	11	14	I
PHILIPS	L	.239	3	17	O
SIMPSON	R	.280	16	7	O
MCCOY	R	.233	14	7	I
VALMORSA	L	.235	14	0	I
GLAVIN	R	.215	0	0	O
HUGHES	L	.248	9	0	O
DETRAILL	L	.245	9	0	O
DAUGHERTY	R	.200	8	0	O
STANLEY	R	.273	0	0	O
HEWLER	L	.260	7	0	O
SMITH	R	.245	7	0	O
LOTT	R	.200	7	0	O
MUMFEL	R	.250	7	0	O

PITCHERS

PLAYER	HAND	ERA
WILLIAMS	R	3.26
FRANCO	R	2.74
BAGWELL	R	3.60
WATKINS	R	3.07
SMITH	R	2.73
WELLS	R	3.77
FRANCO	R	4.23
TULLOCH	L	3.42
MUMFEL	R	3.06

(NA) NATIONAL**BATTERS**

PLAYER	HAND	AVG	HR	RBI	SPD	PTS
DYRESTA	R	.325	7	15	0	0
SABO	R	.270	16	13	1	1
CLARK	L	.259	19	8	1	1
GAMBERG	R	.300	40	0	1	0
MURPHY	R	.280	20	1	0	0
CAVUSUP	R	.309	2	12	0	0
SANTAGO	R	.270	21	8	0	0
LEWIS	L	.254	1	14	1	1
STRUBBS	L	.277	30	10	0	0
BONES	R	.307	33	10	0	0
BRADY	R	.280	32	7	0	0
ALONSO	L	.247	8	10	1	1
WILLIAMS	R	.277	30	8	1	1
OLSON	R	.264	7	5	1	1

PITCHERS

PLAYER	NAME	ERA
ARLINGTON	B	2.40
MARTINEZ	R	2.40
DE MATTIA	R	2.05
MOJA	L	2.07
SMITH	R	2.37
BRANTLEY	R	1.56
DURLE	R	1.74
MARSH	L	2.08
HANCO	L	2.50
HEALON	L	2.45

(AM) AMERICAN**BATTERS**

PLAYER	HAND	AVG	HR	SPD	PTS
RODRIGUEZ	R	.325	28	19	0
SOK	R	.290	4	1	1
LEWIS	L	.300	20	0	0
CARROLL	R	.274	31	12	0
MCDONALD	R	.245	24	6	1
LEWIS	R	.280	2	7	1
BORGES	L	.302	10	7	1
ALTMAN	R	.290	9	1	1
FLAHERTY	R	.271	20	3	1
FRANCO	R	.288	14	14	1
BRADY	R	.244	10	7	1
FEI	R	.298	0	4	0
BURKS	R	.259	27	11	0
FARRISH	R	.268	14	6	1

PITCHERS

PLAYER	NAME	ERA
MELCH	R	2.18
STINE	R	2.30
LARSON	R	1.73
APPEL	L	1.45
SHUPEN	R	1.80
DICKINSON	R	2.67
CLEAVE	R	1.83
BRADY	L	2.00
EDDY	L	2.13
WILSON	R	2.40

(CH) CHICAGO '89 (NTL)**BATTERS**

PLAYER	POUNDS	AVG	HR	RBI	OPS
WILLIAMS	20	.292	2	10	.750
ROBERTSON	20	.275	0	7	.700
FRANKLIN	40	.260	0	10	.680
SCHWARZ	0	.250	0	6	.650
JACKSON	74	.240	1	10	.650
LEWIS	17	.239	1	7	.640
SPRUELL	6	.235	0	2	.620
LEE	20	.230	0	6	.610
MCCARTHY	0	.220	0	5	.600
BRADY	14	.210	0	2	.580
ROSEN	20	.200	0	2	.560
STANLEY	0	.190	0	1	.540
WATSON	20	.185	0	1	.530
MORRISON	0	.180	0	1	.520

PITCHERS

PLAYER	POUNDS	ERA	IP	SHUTOUTS	WINS	LOSSES	SAVES
WILLIAMS	170	3.20	100	1	10	10	0
ROBERTSON	170	3.40	100	1	10	10	0
FRANKLIN	170	3.60	100	1	10	10	0
SCHWARZ	170	3.80	100	1	10	10	0
JACKSON	170	4.00	100	1	10	10	0
LEWIS	170	4.20	100	1	10	10	0
SPRUELL	170	4.40	100	1	10	10	0
LEE	170	4.60	100	1	10	10	0
MCCARTHY	170	4.80	100	1	10	10	0
BRADY	170	5.00	100	1	10	10	0
ROSEN	170	5.20	100	1	10	10	0
STANLEY	170	5.40	100	1	10	10	0
WATSON	170	5.60	100	1	10	10	0
MORRISON	170	5.80	100	1	10	10	0

(SF) SAN FRANCISCO '89**BATTERS**

PLAYER	POUNDS	AVG	HR	RBI	OPS
WILLIAMS	20	.300	4	14	.780
THOMPSON	20	.280	2	8	.720
LEE	20	.260	0	6	.680
MORRISON	0	.250	0	5	.650
MCCARTHY	0	.240	0	4	.620
WATSON	0	.230	0	3	.600
LEE	0	.220	0	2	.580
MORRISON	0	.210	0	1	.560
WATSON	0	.200	0	1	.540
LEE	0	.190	0	1	.520
WATSON	0	.180	0	1	.500
WATSON	0	.170	0	1	.480
WATSON	0	.160	0	1	.460
WATSON	0	.150	0	1	.440
WATSON	0	.140	0	1	.420

PITCHERS

PLAYER	POUNDS	ERA	IP	SHUTOUTS	WINS	LOSSES	SAVES
WILLIAMS	170	3.20	100	1	10	10	0
THOMPSON	170	3.40	100	1	10	10	0
LEE	170	3.60	100	1	10	10	0
MORRISON	170	3.80	100	1	10	10	0
MCCARTHY	170	4.00	100	1	10	10	0
WATSON	170	4.20	100	1	10	10	0
LEE	170	4.40	100	1	10	10	0
MORRISON	170	4.60	100	1	10	10	0
WATSON	170	4.80	100	1	10	10	0
LEE	170	5.00	100	1	10	10	0
MORRISON	170	5.20	100	1	10	10	0
WATSON	170	5.40	100	1	10	10	0
LEE	170	5.60	100	1	10	10	0
MORRISON	170	5.80	100	1	10	10	0
WATSON	170	6.00	100	1	10	10	0

(BO) BOSTON '88**BATTERS**

PLAYER	POUNDS	AVG	HR	RBI	OPS
WILLIAMS	20	.300	4	14	.780
THOMPSON	20	.280	2	8	.720
LEE	20	.260	0	6	.680
MORRISON	0	.250	0	5	.650
MCCARTHY	0	.240	0	4	.620
WATSON	0	.230	0	3	.600
LEE	0	.220	0	2	.580
MORRISON	0	.210	0	1	.560
WATSON	0	.200	0	1	.540
LEE	0	.190	0	1	.520
WATSON	0	.180	0	1	.500
WATSON	0	.170	0	1	.480
WATSON	0	.160	0	1	.460
WATSON	0	.150	0	1	.440
WATSON	0	.140	0	1	.420

PITCHERS

PLAYER	POUNDS	ERA	IP	SHUTOUTS	WINS	LOSSES	SAVES
WILLIAMS	170	3.20	100	1	10	10	0
THOMPSON	170	3.40	100	1	10	10	0
LEE	170	3.60	100	1	10	10	0
MORRISON	170	3.80	100	1	10	10	0
MCCARTHY	170	4.00	100	1	10	10	0
WATSON	170	4.20	100	1	10	10	0
LEE	170	4.40	100	1	10	10	0
MORRISON	170	4.60	100	1	10	10	0
WATSON	170	4.80	100	1	10	10	0
LEE	170	5.00	100	1	10	10	0
MORRISON	170	5.20	100	1	10	10	0
WATSON	170	5.40	100	1	10	10	0
LEE	170	5.60	100	1	10	10	0
MORRISON	170	5.80	100	1	10	10	0
WATSON	170	6.00	100	1	10	10	0

(SF) SAN FRANCISCO '87

BATTERS

PLAYER	HAND	AVG	HR	RBI	POS
THOMPSON	R	.362	12	32	1B
LEONARD	R	.280	24	33	3B
CHUDOFF	R	.276	15	33	1B
CHAVEZ	L	.270	25	27	2B
LANE	L	.260	24	33	3B
MALINCHUK	R	.242	20	25	2B
WILSON	R	.237	10	28	2B
LEWIS	R	.231	4	33	1B
SMOLTYE	R	.223	6	28	2B
US TOWRO	R	.242	11	28	1B
BALLET	L	.263	3	40	1B
MELVIN	R	.180	11	33	1B
BURROWS	R	.183	8	28	1B
ROSENBERG	L	.267	1	33	1B

PITCHERS

PLAYER	HAND	ERA
TOOMEY	R	3.74
LAGOS	R	3.68
WATSON	L	3.04
ERIKSON	R	3.00
WHEELER	R	3.22
CONVERSE	R	3.06
QUAYTON	L	3.20
TRACY	L	3.43
HARRIS	L	3.25
ROSENBERG	R	3.22

(BO) BOSTON '86

BATTERS

PLAYER	HAND	AVG	HR	RBI	POS
FLECK	R	.340	3	33	1B
BRADY	L	.277	2	33	1B
GARRIS	L	.267	10	33	1B
LANE	R	.250	24	33	2B
RIFKIN	R	.244	21	33	1B
RAMOS	R	.233	10	33	1B
JENNAN	L	.232	10	28	2B
QUINN	L	.225	12	33	1B
BRIDGES	R	.223	10	33	1B
SMITH	R	.212	3	33	1B
WYNN	L	.207	1	33	1B
SMITH	R	.180	3	33	1B
ROSENBERG	R	.180	3	33	1B
JENNAN	L	.180	3	33	1B

PITCHERS

PLAYER	HAND	ERA
JENNAN	R	3.42
WYNN	L	2.95
SMITH	R	3.74
WYNN	R	3.36
JENNAN	R	4.37
BRIDGES	L	3.64
JENNAN	R	3.41
BRIDGES	R	3.52
WATSON	R	3.38
JENNAN	R	3.94

(CA) CALIFORNIA '86

BATTERS

PLAYER	HAND	AVG	HR	RBI	POS
PETTS	R	.316	3	33	1B
SCHUBERT	R	.270	11	33	1B
WYNN	L	.260	10	33	1B
MULLEN	R	.252	7	33	1B
DOMINGA	R	.247	11	33	1B
WYNN	L	.233	11	33	1B
WYNN	L	.232	10	33	1B
WYNN	L	.225	12	33	1B
WYNN	L	.203	10	33	1B
VOLKOR	R	.203	2	33	1B
MELVIN	R	.180	11	33	1B
WYNN	L	.180	11	33	1B
HOMER	L	.177	2	33	1B
WYNN	L	.177	2	33	1B

PITCHERS

PLAYER	HAND	ERA
WYNN	L	3.84
MULLEN	R	4.30
WYNN	L	3.80
WYNN	L	3.75
WYNN	L	4.11
WYNN	L	5.04
WYNN	L	3.41
WYNN	L	3.31
WYNN	R	3.60
WYNN	L	3.74

(KC) KANSAS CITY '85

BATTERS

PLAYER	HITS	AVG	HR	SPR	RHS
WILSON	5	.250	1	10	5
SMITH	9	.281	8	11	9
SPRUE	1	.125	0	5	1
SMALOMI	8	.333	0	5	1
GOSEWICK	5	.260	2	7	1
MALIN	8	.333	5	7	1
KRISTOFF	0	.000	0	0	0
OSBORN	4	.333	3	7	1
HARTLEY	4	.286	1	11	3
MCHEE	1	.143	1	14	3
STARK	2	.286	1	14	3
GREENGLASS	2	.286	1	14	3
SWENKEY	1	.125	1	8	3
SWENSON	1	.200	1	5	3

PITCHERS

PLAYER	WINS	ERA
SABERSHIP	6	1.87
YONKAL	1	1.00
MONSON	1	1.42
BLOCH	1	3.33
WILGHEM	4	2.17
WELLMAN	6	1.93
FLAN	6	2.00
MULLER	6	3.00
OSBY	4	4.00
FROSTERS	0	1.50

(SL) ST. LOUIS '85

BATTERS

PLAYER	HITS	AVG	HR	SPR	RHS
WILSON	5	.250	1	10	5
SMITH	7	.281	7	11	9
SPRUE	1	.125	0	5	1
SMALOMI	8	.333	0	5	1
GOSEWICK	5	.260	2	7	1
MALIN	8	.333	5	7	1
KRISTOFF	0	.000	0	0	0
OSBORN	4	.333	3	7	1
HARTLEY	4	.286	1	11	3
MCHEE	1	.143	1	14	3
STARK	2	.286	1	14	3
GREENGLASS	2	.286	1	14	3
SWENKEY	1	.125	1	8	3
SWENSON	1	.200	1	5	3

PITCHERS

PLAYER	HITS	ERA
WILSON	7	1.50
SMITH	7	3.40
SPRUE	6	5.50
BLOCH	6	4.42
WILGHEM	1	1.50
WELLMAN	0	2.93
FLAN	1	2.00
MULLER	0	3.00
OSBY	0	3.00
FROSTERS	0	1.50

(LA) LOS ANGELES '85

BATTERS

PLAYER	HITS	AVG	HR	SPR	RHS
WILSON	5	.250	1	10	5
SMITH	7	.281	7	11	9
SPRUE	1	.125	0	5	1
SMALOMI	8	.333	0	5	1
GOSEWICK	5	.260	2	7	1
MALIN	8	.333	5	7	1
KRISTOFF	0	.000	0	0	0
OSBORN	4	.333	3	7	1
HARTLEY	4	.286	1	11	3
MCHEE	1	.143	1	14	3
STARK	2	.286	1	14	3
GREENGLASS	2	.286	1	14	3
SWENKEY	1	.125	1	8	3
SWENSON	1	.200	1	5	3

PITCHERS

PLAYER	HITS	ERA
WILSON	0	1.50
SMITH	0	3.40
SPRUE	1	5.50
BLOCH	0	4.42
WILGHEM	1	1.50
WELLMAN	0	2.93
FLAN	1	2.00
MULLER	0	3.00
OSBY	0	3.00
FROSTERS	0	1.50



PROBLEMS or QUESTIONS?

We recommend that you read this instruction booklet to learn and master the operation of this game. Should you have any further problems or questions about playing this game or any of Tengen's games, please call a *Tengen game counselor* at **(408) 433-3999** Monday through Friday from 8:30AM-6:00PM Pacific Time.

TENGEN

ARCADE HITS THAT HIT HOME

675 Sycamore Drive • Milpitas, CA 95035

Tengen, Tengen logo and trademarks of Tengen Inc. © 1987 Tengen, Inc. All rights reserved. This game is manufactured by Tengen Inc. © 1987 Tengen, Inc. The Sega logo is the SEGA logo. All other trademarks are the property of their respective owners.

Atari

